

The strategy of environmental conservation and of rural tourism development in Meru Betiri National Park, East Java Indonesia

Luchman Hakim – Dept Biology FMIPA Univ. Brawijaya

Soemarno – Fac. Agriculture, Univ. Brawijaya

Dodit A. Guntoro – Meru Betiri National Park



Presented at International Seminar on Tourism 2014: “Eco-resort and destination sustainability: Planning, Development, Impact”. Universitas Pendidikan Indonesia, Bandung 27-27 October 2014.



National park and Tourism

- **Indonesian NPs** have high biodiversity and natural attractions
- Pressure to NPs: **HIGHT** > lead to biodiversity disturbance & decrease
- Tourism offer **opportunities** to support conservation in NP
- **Problems** of tourism in NP: from planning to implementation



Meru Betiri National Park

- High level biodiversity; some of them are endemic to park
- Human pressure was high
- Poor community surrounding MBNP
- Tourism in MBNP provides opportunities to support conservation



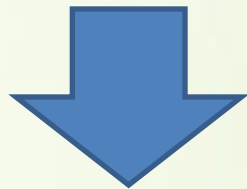
Meru Betiri NP





Objective

- **Describe the local people and stakeholder perspective to the tourism development in an area adjacent to the national park.**



**The strategy environmental
conservation and of rural
tourism development**



Methods

1

- **Tourism and conservation policy**
- Document survey

2

- **Local community and stakeholder perception**
- FGD

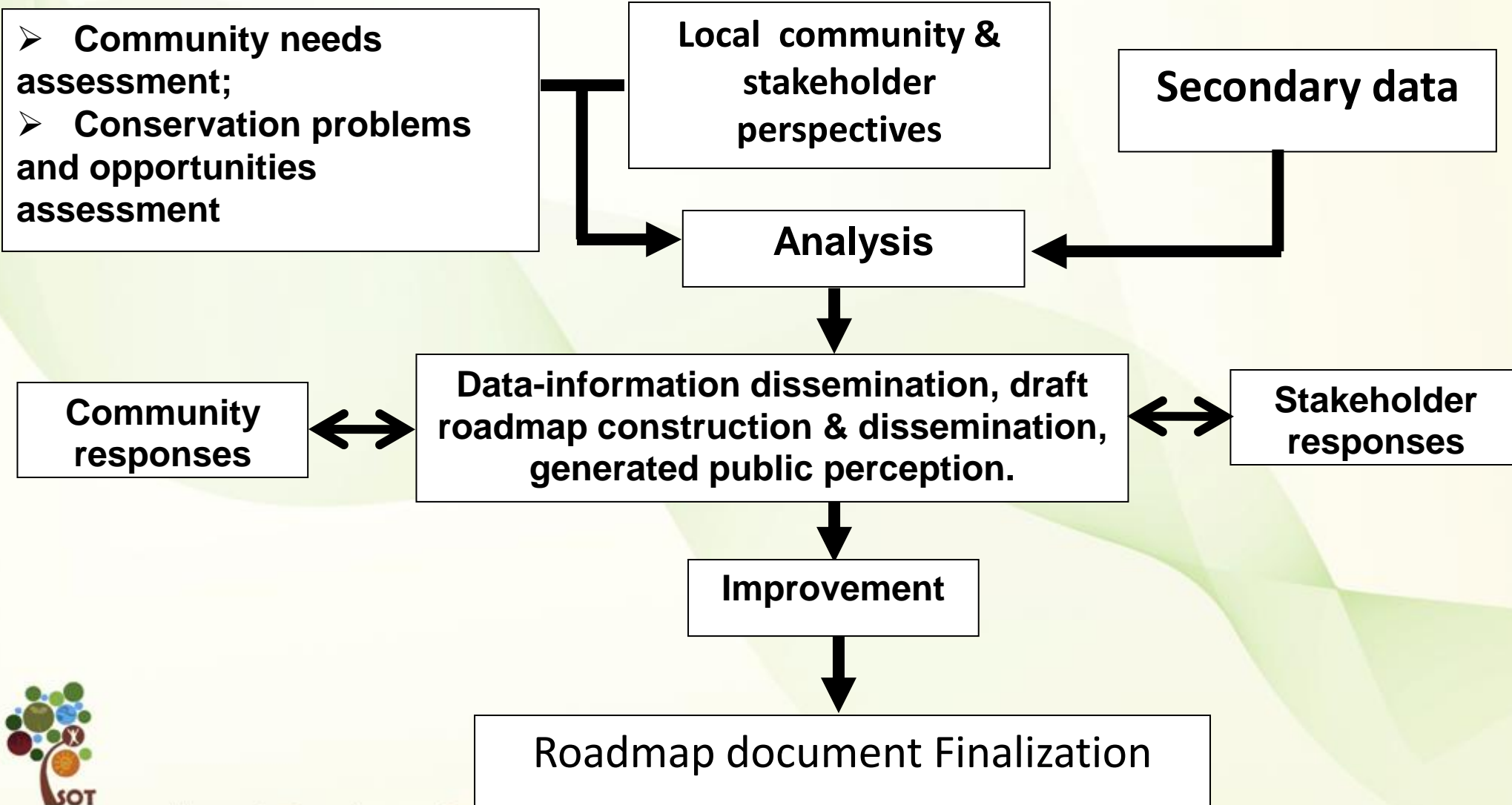
3

- **Roadmap construction**
- Data-information elaboration, synthesis, public dissemination





Framework of community-based roadmap construction in Rajegwesi





Local community in Rajegwesi

- Refuges (after Tsunami attack 1994) not permanent resident in Rajegwesi
- Coastal village, dominated by traditional fisherman
- High conflict on forest resources
- Economic incomes high in fish-abundance season



PETA TANAH AD DAN RAJEGWESI SKALA 1:20.000



LEGENDA

: KANTOR

: BATAS KAWASAN

: BATAS SEKSI

: BATAS RESORT

: SUNGAI

: KONTUR

: JALAN

: TANAH AD (231,82 Ha)

: PEMUKIMAN RAJEGWESI (14,66 Ha)

: PERAMBAHAN (62,53 Ha)

: ZONA REHABILITASI (166,48 Ha)

: PERTANIAN RAJEGWESI (24,7 Ha)

Indeks peta SPTN I Sarongan TNMB skala 1:350.000



RESORT RAJEGWESI

blok dam

Besaran

kampung baru

Bayuran

yapet

rajegwesi

Pos Benteng

Pantai Rajegwesi

sungapan

0 0.5 1 2 3 km

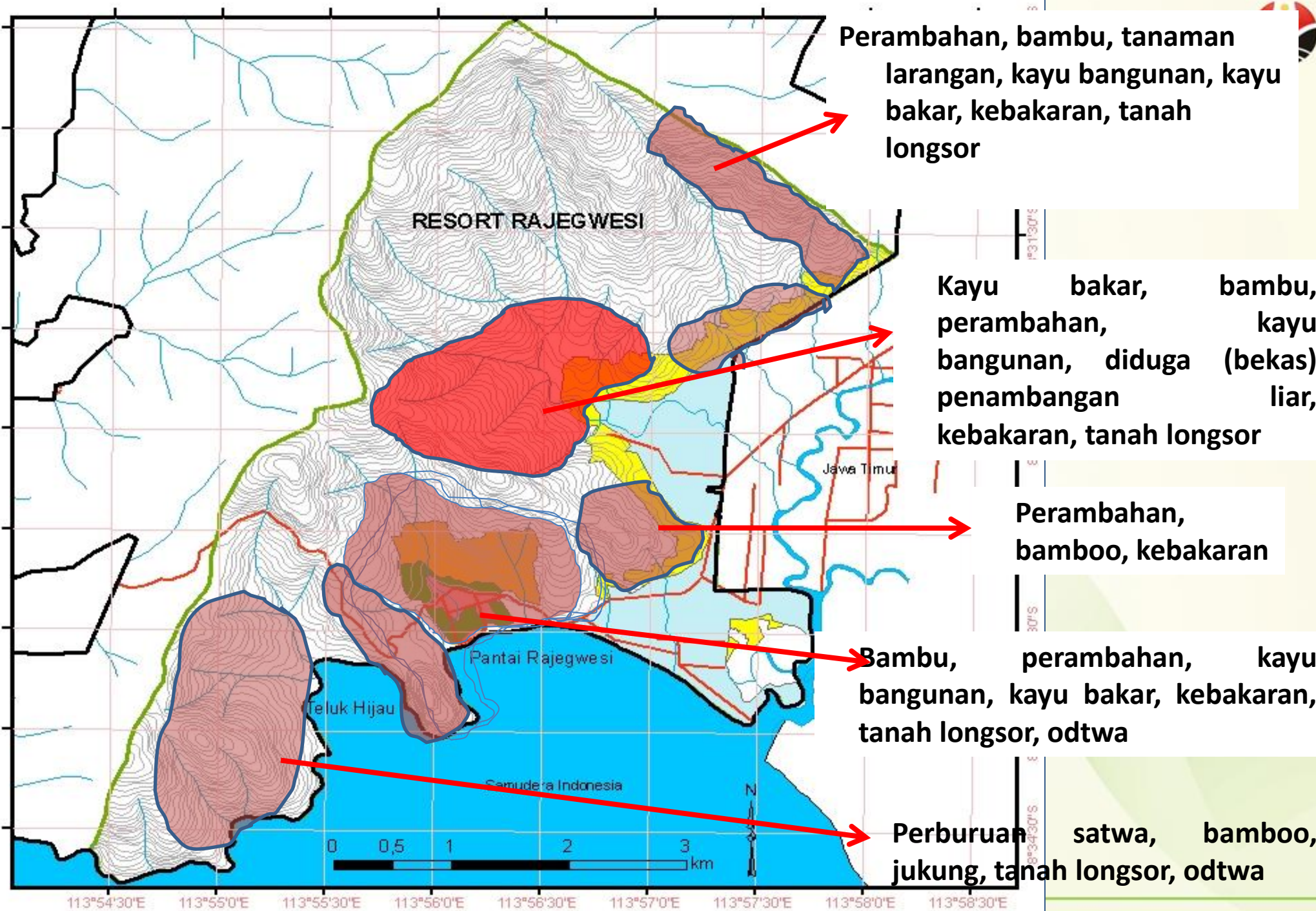


113°56'0"E

113°56'30"E

113°57'0"E

113°57'30"E



Tourism object distribution

Keterangan :

A = Teluk Hijau

B = Lokasi Goa Jepang dan Raflessia

C = View ke Teluk Damai dan akses ke Teluk Hijau

D = View ke arah Teluk Hijau

E = Desa Nelayan Rajekwesi

F = Akses masuk ke Rajekwesi di tanjung kecil dimana terdapat 2 goa jepang

G = Bukit kecil yang dapat dijadikan rest point terbaik untuk menikmati suasana teluk

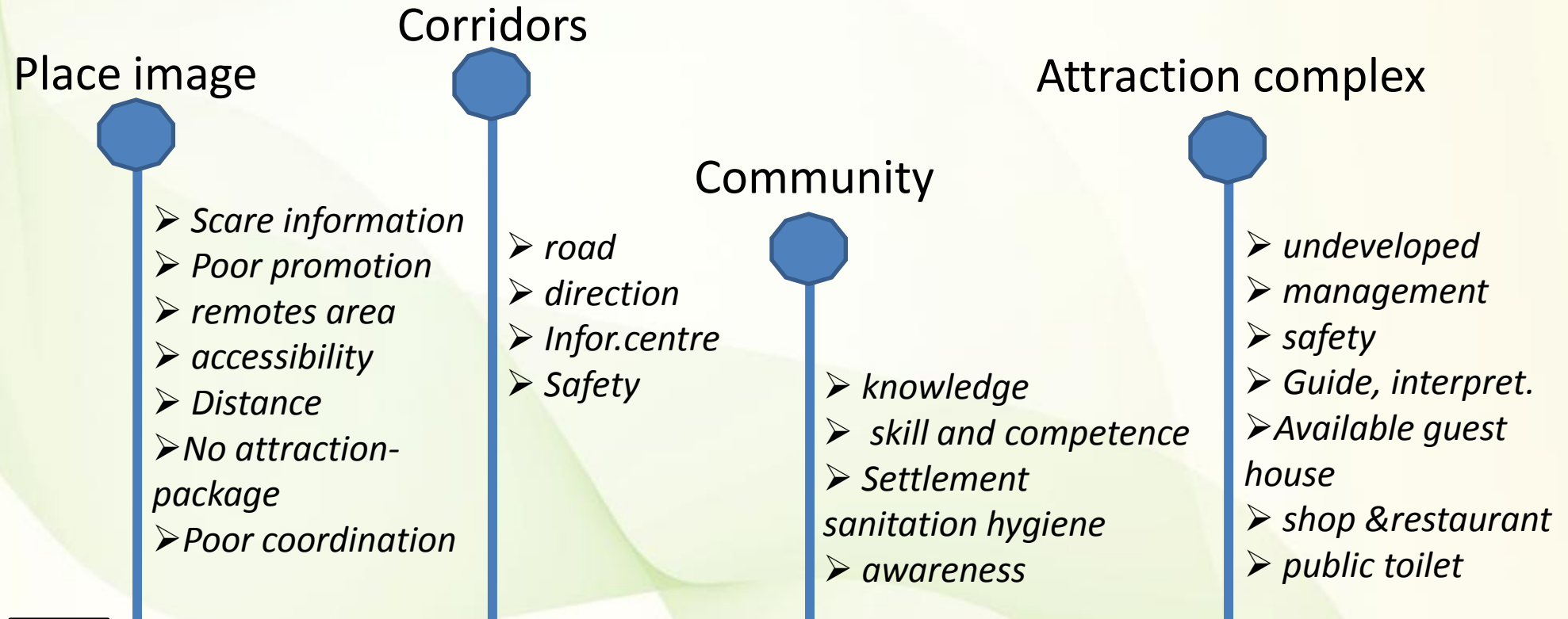
I = Kantor Taman Nasional Meru Betiri



Local people perspectives

- Conflict of land tenure in Rajegwesi
- Forest resources use and biodiversity disturbance
- Poor human resources
- Human settlement and national park boundaries
- Local people involvement in national park program
- Many procedure and criteria to open business related tourism in protected area
- Less of external support to the community development





TOURIST

Rajegwesi in the perspectives of tour operator, guide, tourist

Rajegwesi not interesting point to visit

SUKA
MADE
BEACH

NP and Local government notes on Tourism facility- infrastructure

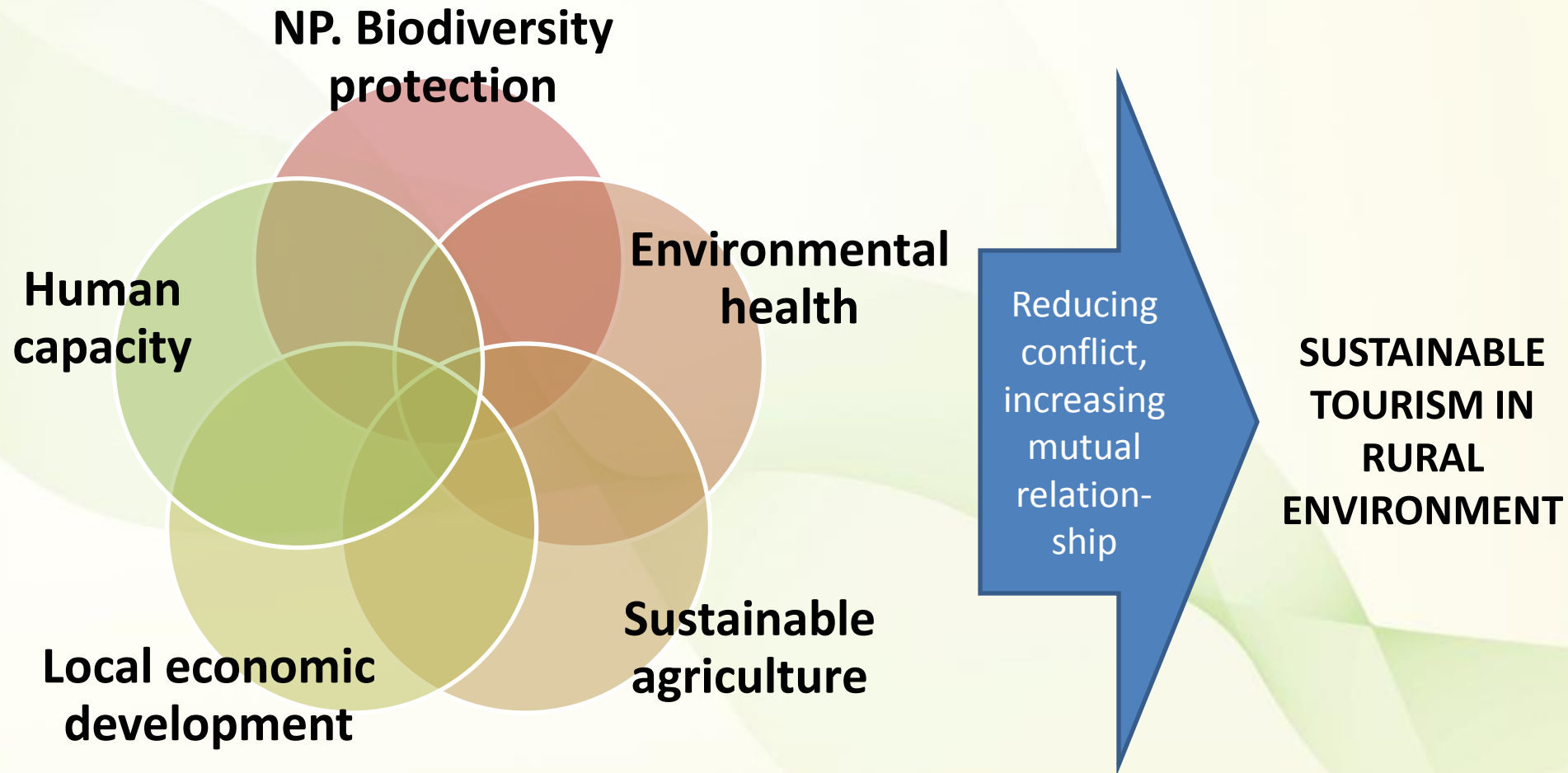


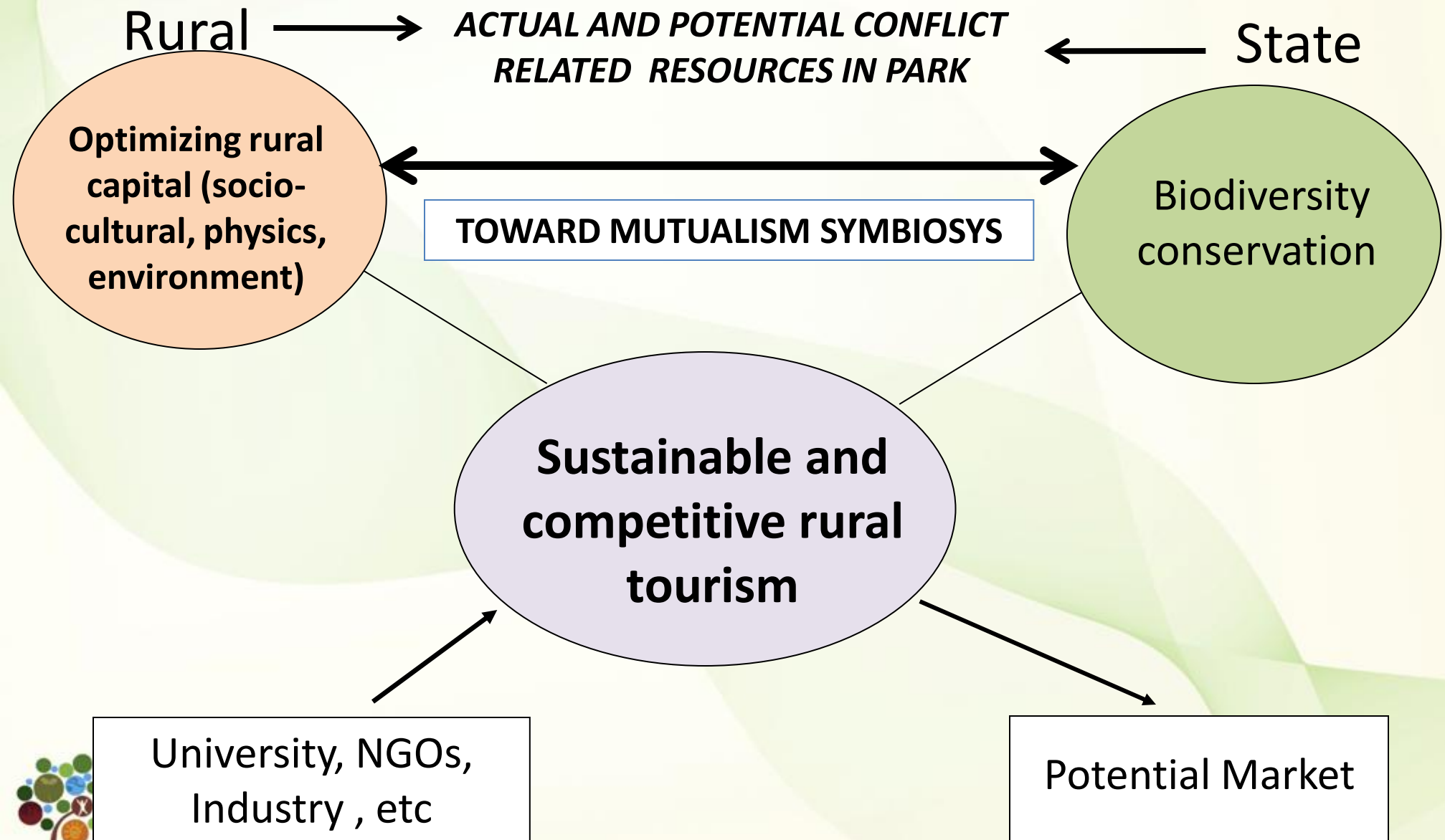
- Gate, entry permit & ticket
- Home stay,
- Small & simple restaurant (warung makan),
- Public toilet,
- Shelter
- Tracking routes,
- Fisherman boat,
- Information centre





Agenda for environmental conservation







Multi-stakeholder commitments and contributions

Various perspectives and objectives



Sustainable tourism destination

Opportunities for
sustainable rural
development

➔ **INTEGRATION** ➔

Community live in
harmony with NP &
Conservation

2011

2012

2013

2014

2015

Introducing tourism
program

Community involvement and development in Rajegwesi

Initial tourism program

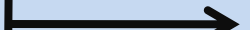
Development stage of tourism in Rajegwesi area

Enhancing program and attraction

Eco-destination management

Enhancing
sustainability
and
competitiveness

Increasing tourism contribution in local
economic development



Conclusion

- Tourism in Rajegwesi is potential key to enhance NP conservation and local people development
- The possibility of sustainable tourism comes from the integration & network of local people-tourism industry-National Park-NGO/Univ.
- The established roadmap through participative process of multi-stakeholder open opportunities for tourism and conservation program in harmony

